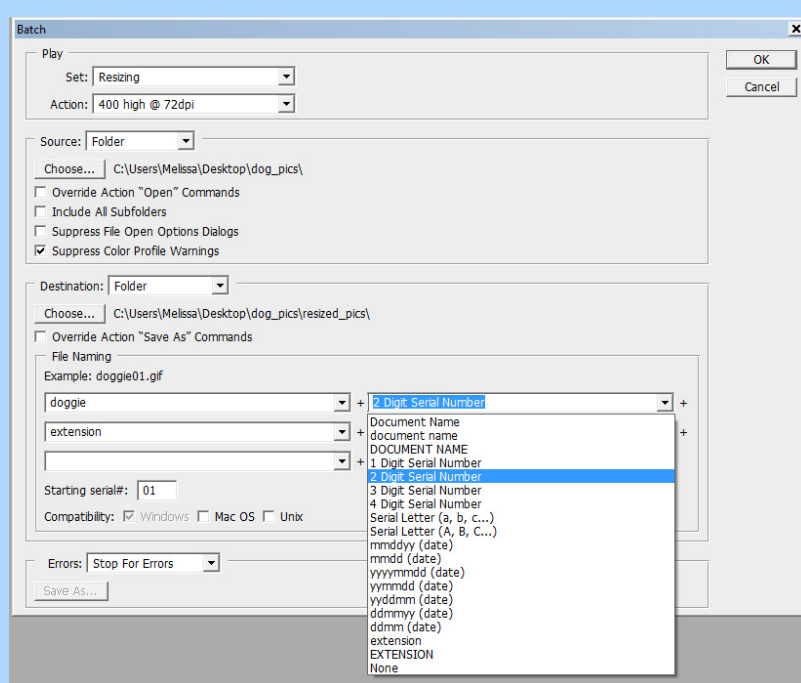


1. In Photoshop, select 'Automate' and 'Batch...' under the File menu.



2. Adjust your batch settings as follows:

a. In the 'Play' box, choose the set and action you recorded for resizing.

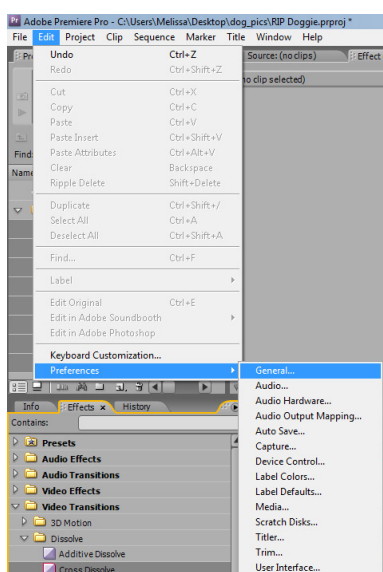
b. Set the source to 'Folder' and click 'Choose...', then navigate to where your photos are stored. Check 'Suppress Color Profile Warnings.' NOTE: If you require files to be in a specific order, either rename them prior to importing or open them in reverse order, then select 'Open Files' in this box.

c. Set the destination to 'Folder', click 'Choose...' and navigate to where you want the resized photos stored. (Note: If you want to overwrite the originals [not recommended], choose 'Save and Close' instead of folder, then skip to step e.)

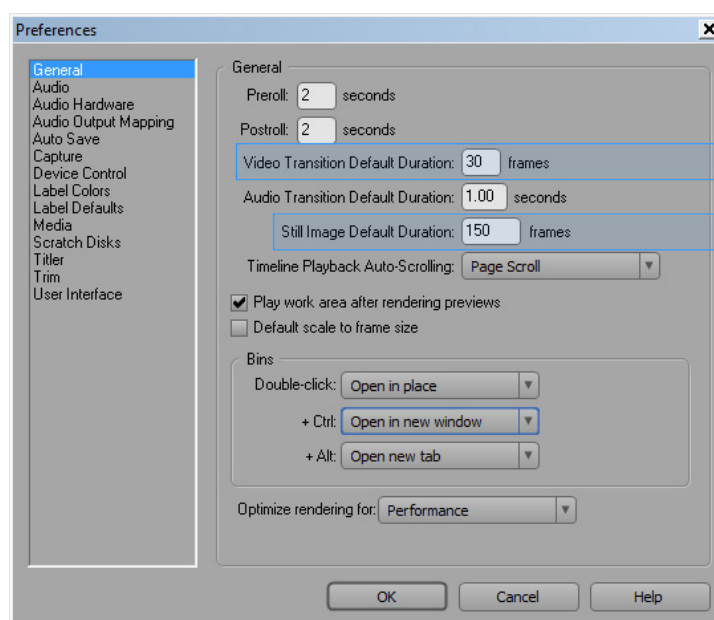
d. In file naming, set up a distinctive naming system for your new photos. It is highly recommended you type a custom description, then select a serial number and extension. Choose a starting serial (default is 1).

e. Select 'OK' to start the automation.

3. Close Photoshop and open a new project in Premier.

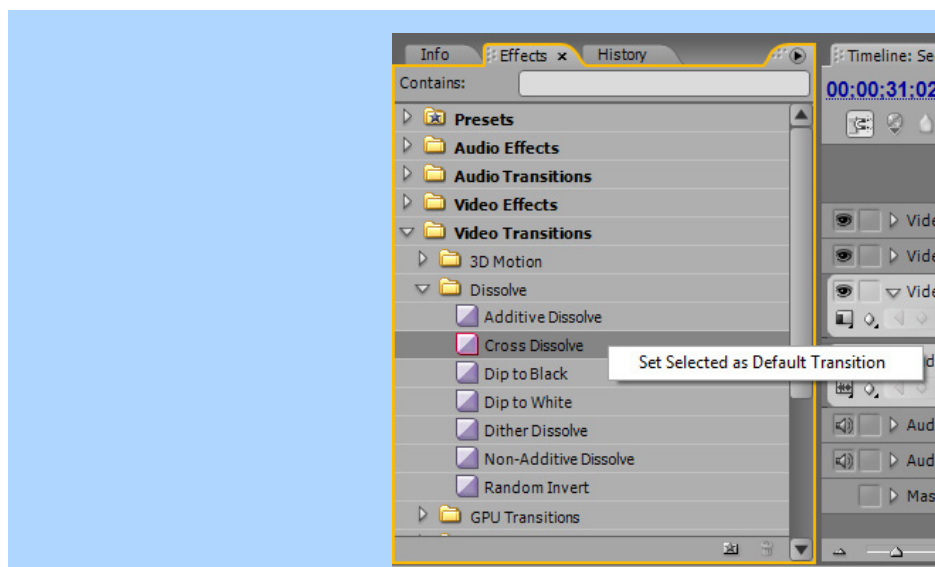


4. Set your still media duration preferences by selecting 'Preferences' and 'General...' under the Edit drop-down menu.

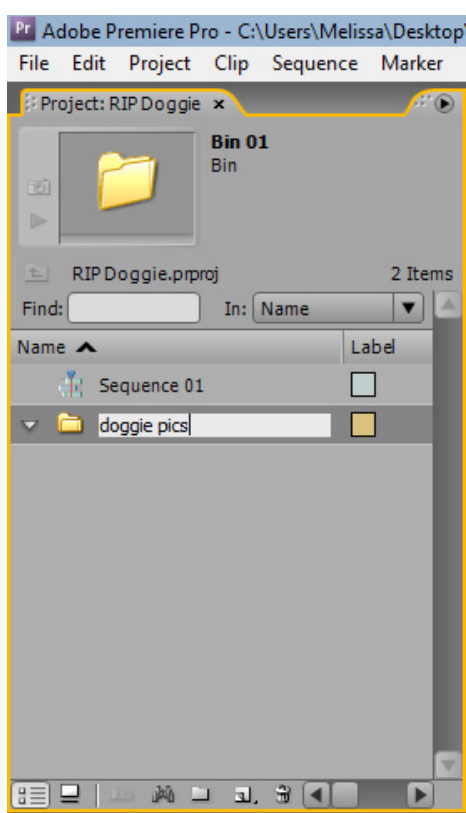


5. Calculate the length of time you want the stills to fill in the timeline, converting the duration to frames (default is 150 frames or 5 seconds). Include transition time in your calculation.

6. If necessary, change the video transition default from 30 frames/1 second.

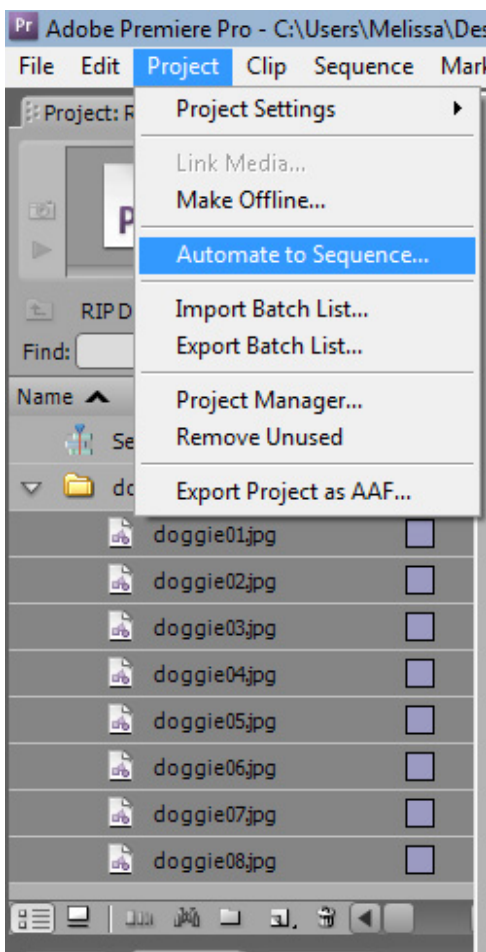


7. Set the transition you wish to use by selecting it in the Effects box, right-clicking on it, then selecting 'Set Selected as Default Transition'. The default is Cross Dissolve.



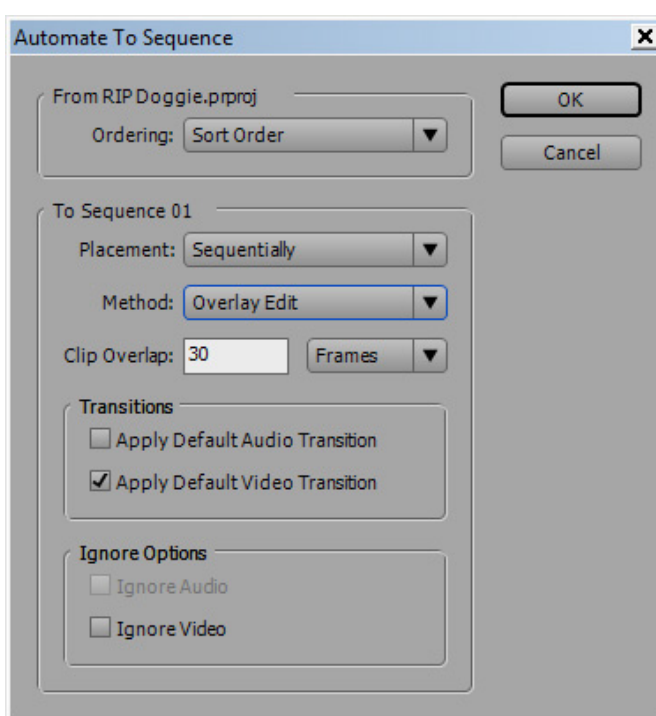
8. If you have a lot of other media in your Premiere project, it will be helpful to set up a new bin just for the pictures you've resized.

9. Open the new bin and double-click the grey area to open the import file dialog box. Navigate to your files and select them all by dragging a lasso around them, holding down Ctrl while selecting files, or, if your files are in their own folder, holding down Ctrl + A.



10. By default, your files will be selected after importing.

11. In the 'Project' drop-down menu, select 'Automate to Sequence...'.



12. Adjust settings in the Automate To Sequence dialog box. If your timeline is empty, the defaults will probably suffice.